

AlyTech GasMix software

The software is fully automated allowing for a single injection to run or a pre-programmed sequence. The GasMix can be controlled remotely or by the start command of an analyzer. An added benefit of the

Compliant to EN standards: Repeatability and linearity tests of SO₂, NO-NO_x and CO analyzers are simplified and automated.

Standard gases and sequences of gas mixtures are defined through the GasMix™ ATMO control interface, giving the ability to create projects adapted to every need and every procedure (repeatability, linearity...)

An Audit Trail function included in the software guarantees the operation traceability, recording the actual flows sent to the analyzers.

GAS MIX ATMO



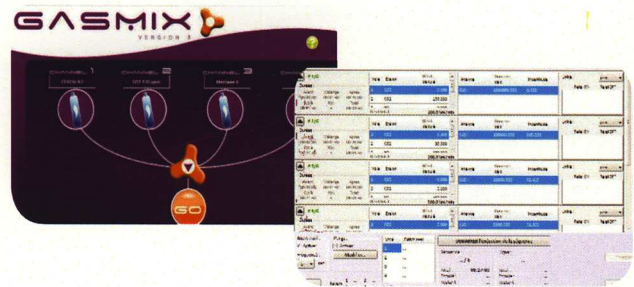
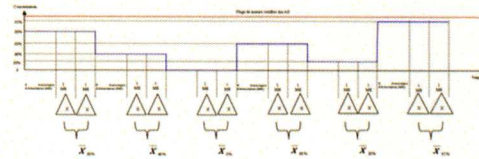
GAS MIX™
ATMO



Calibrate
3 analyzers
in a row
automatically

GasMix™ ATMO, the gas dilutor dedicated to air monitoring agencies.

Developed according to specifications with 2 air monitoring agencies, GasMix™ ATMO can calibrate 3 analyzers in a row automatically.



- Digitally driven
- Compliant to ISO 6145-7 standard
- Couples of ON/OFF valves and 3-way valves
- Equipped with 2 Mass Flow Controllers (MFC)
- Dilution ratio : up to 1/10000

Technical specifications:

Size: L x W x H (cm) : 42 x 22 x 46 (16.5"x8.5"x18")

Weight : 15.5 kgs 35 Lbs

Connectors : Swagelok 1/8" - 1/4" for the diluent gas

Uncertainty : < 2% on the whole range

Dilution : variable, according to your specific needs

IT : USB - Windows 7 recommended

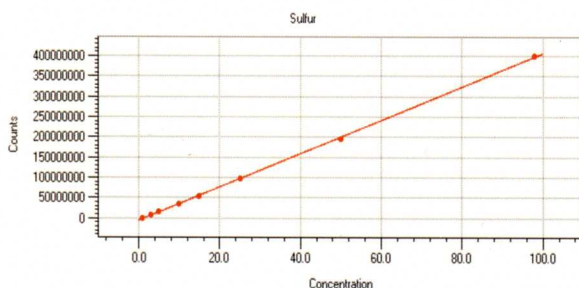
Power supply : 230 V / 2A / 50-60 Hz

Inlet pressure : 3 bar

Outlet pressure : atmospheric, higher pressure possible (please contact us)

* Note Specifications subject to change without notice

GasMix™ system is Linear, Accurate and Repeatable



www.alytech.fr

www.alytech.fr

For more information
www.alytech.com
e-mail à gasmix@alytech.com

3, rue Condorcet 91260 Juvisy sur Orge (France)
Tél. : +33 (0)1 69 56 07 17 - Fax : +33 (0)1 69 44 49 81